

# DogVerse

## Find, train, and care for your furry companion

---

### Dog Park Etiquette: How to Ensure a Safe and Fun Visit

Dog parks provide a wonderful opportunity for your dog to socialize and exercise. However, ensuring a safe and enjoyable visit requires following proper dog park etiquette. Let's explore essential tips for making your dog park experience pleasant for everyone.

#### Preparing for the Dog Park

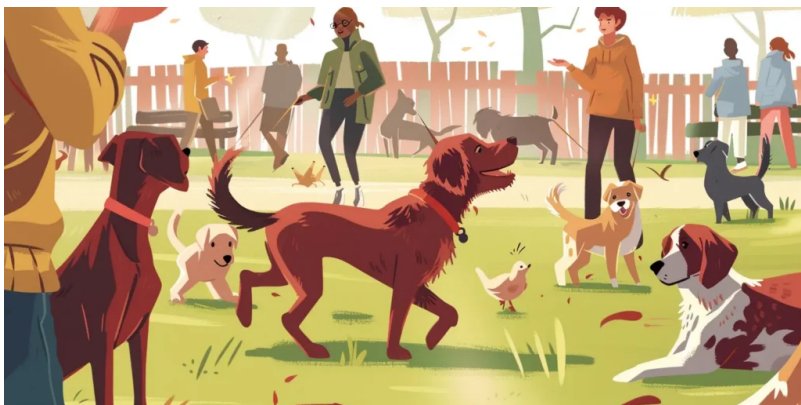
Before heading to the park, ensure your dog is healthy and up-to-date on vaccinations. Healthy dogs reduce the risk of spreading diseases. Always carry water and waste bags to keep your dog hydrated and the park clean. Additionally, make sure your dog wears a well-fitted collar with ID tags. Proper identification is crucial in case your dog wanders off.

When you arrive, leash your dog until you are inside the designated off-leash area. Unleashing too soon can cause chaos and potential conflicts. Observe the park environment and the behavior of other dogs before entering.

#### Introducing Your Dog

Introduce your dog to the park gradually. Allow them to sniff around and get comfortable with the new surroundings. Avoid rushing into interactions with other dogs. Positive reinforcement, such as treats and praise, encourages good behavior and helps your dog feel secure.

Observe other dogs for signs of aggression or discomfort. If any dog appears overly aggressive or nervous, wait before allowing your dog to interact. Gradual introductions help prevent conflicts and create a harmonious environment.



#### Monitoring Play

**Supervise your dog at all times. Pay attention to their interactions with other dogs. Intervene if play becomes too rough or aggressive. Knowing the difference between play and aggression is crucial. Happy dogs display relaxed body language and wagging tails.**

**If your dog becomes overly excited, redirect their attention with toys or a quick walk. Regularly check on your dog's behavior to ensure they are playing nicely. Always be ready to step in if necessary.**



### **Cleaning Up**

**Always clean up after your dog. Bring extra waste bags to ensure you can dispose of waste properly. Leaving waste behind is disrespectful to other park users and can spread diseases. A clean park is a safe park for all dogs and their owners.**

**Transitioning from play to rest, provide water to keep your dog hydrated. Take breaks to prevent exhaustion, especially on hot days. Watch for signs of fatigue or overheating and allow your dog to rest in a shaded area.**



### **Respecting Others**

**Respect other park visitors and their dogs. Not all dogs enjoy rough play or constant interaction. Ask before allowing your dog to approach another dog. Maintain a friendly demeanor and communicate clearly with other dog owners.**

**If an issue arises, handle it calmly and respectfully. Remove your dog if necessary to defuse the situation. Open communication with other owners helps resolve conflicts quickly and peacefully.**

## **Conclusion**

**Practicing good dog park etiquette ensures a safe and fun visit for everyone. Proper preparation, monitoring your dog, and respecting others create a positive environment. By following these tips, you and your dog can enjoy a delightful experience at the dog park.**